



# International 14 Prince of Wales Cup and 2019 UK National Championships

Sunday 25<sup>th</sup> – Friday 30<sup>th</sup> August

Organising Authority: RCYC Events Ltd,  
Falmouth, Cornwall, UK

in conjunction with the Royal Cornwall Yacht Club  
and the GBR International 14 Class Association

## SAILING INSTRUCTIONS

Abbreviations:

[NP] - A breach of this rule will not be grounds for protest by a boat.

[DP] - Rules for which the penalties are at the discretion of the protest committee.

### 1. RULES

---

- 1.1** The regatta will be governed by the rules as defined in *The Racing Rules of Sailing* (RRS).
- (a) RRS 40 applies at all times while afloat. Flag Y will not be displayed. This changes the Part 4 preamble and RRS 40. Wet suits and dry suits are not personal flotation devices.
  - (b) RRS 31 is changed so that marks other than starting and finishing marks may be touched without penalty.
  - (c) A rule in the sailing instructions shall take precedence over a rule in the notice of race. This changes RRS 63.7.
  - (d) Other changes to the RRS are described in the relevant sailing instructions.
- 1.2** If there is a conflict between languages then the English text will take precedence.

### 2. NOTICES TO COMPETITORS

---

- 2.1** The race office is located within Falmouth Watersports Centre (FWC). Notices to competitors will be posted on the official notice board on the outside wall of the centre facing the boat park. Copies of notices may also be at [www.royalcornwallyachtclub.org/international-fourteen-prince-of-wales-cup-week-2019/](http://www.royalcornwallyachtclub.org/international-fourteen-prince-of-wales-cup-week-2019/).
- 2.2** The race committee may also use WhatsApp to communicate informally with competitors.

### 3. CHANGES TO SAILING INSTRUCTIONS

---

Any change to the sailing instructions will be posted before 0900 on the day it will take effect, except that any change to the schedule of races will be posted by 2000 on the day before it will take effect.

### 4. SIGNALS MADE ASHORE

---

- 4.1** Signals made ashore will be displayed from the signals mast at FWC.
- 4.2** [NP][DP] No boat shall leave the FWC before flag D is displayed ashore with one sound signal. The warning signal will be made not less than 90 minutes after flag D is displayed.
- 4.3** When flag AP is displayed ashore, Flag D will be displayed one minute after removal. This changes RRS Race Signals AP
- 4.4** When flag L is displayed ashore it will be displayed only for the first day that the relevant notice to competitors comes into effect. This changes race signals L.

## 5. SCHEDULE

---

### 5.1 Schedule

Date	Race and Official Functions	Time	Tide
Sunday 25 <sup>th</sup>	Registration	1000-1600 in FWC 1800-1900 at RCYC	-
	Competitors' briefing	1900 at RCYC	
	Final registration	0900-1000 in FWC	
Monday 26 <sup>h</sup>	Daily briefing	1000 in boat park	LW 0813 1.8m HW 1413 4.3m
	Two races back-to-back <sup>(1)</sup>	No warning signal before 1200	
	Daily briefing	1000 in boat park	
Tuesday 27 <sup>h</sup>	Two races back-to-back <sup>(1)</sup>	No warning signal before 1200	LW 0932 1.5m HW 1524 4.6m
	Daily briefing	1000 in boat park	
Wednesday 28 <sup>th</sup>	Registration for Prince of Wales Cup only	1000 in FWC	LW 1039 1.2m HW 1625 5.0m
	Daily briefing	1100 in boat park	
	One race for Prince of Wales Cup	No warning signal before 1300	
Thursday 29 <sup>th</sup>	Daily briefing	1000 in boat park	LW 1139 0.8M HW 1718 4.6m
	One series race and Coastal race <sup>(2)</sup> back-to-back	No warning signal before 1200	
Friday 30 <sup>h</sup>	Daily briefing	1000 in boat park	LW 1233 0.5m HW 1809 5.5M
	Two races back-to-back <sup>(1)</sup>	No warning signal before 1200	
	Prize-giving dinner	1930 at RCYC	-

Note 1. The race committee may bring forward the start of a series race to an earlier day of the event (except Races 1 & 2) or postpone a series race to a later day of the event (except not to Wednesday) according to forecast weather conditions in order to maintain the overall schedule. No more than 3 races will be sailed in a day. The race committee will notify its intention by posting a notice on the official notice board not less than 90 minutes before the first warning signal.

Note 2. Supplementary instructions will be issued for the Coastal race after boats arrive in Falmouth.

- 5.2** The warning signal for a succeeding race will be made as soon as practicable. To alert boats that a race or sequence of races will begin soon, the orange starting line flag will be displayed with one sound approximately five minutes before a warning signal is displayed.
- 5.3** No warning signal will be made after 1530 on Friday 30<sup>th</sup> September.

## 6. CLASS FLAG

---

The class flag displayed at the warning signal will be IC M.

## 7. RACING AREAS

---

- 7.1** Racing will take place in Falmouth Bay or adjacent waters to the east. If conditions in the bay are unsuitable racing may be held within the estuary (see addendum A).
- 7.2** The day's initial course area will be displayed on the official notice board not less than 90 minutes before the first warning signal.

## 8. THE COURSE

---

- 8.1** The diagrams in addendum B shows the course, the order in which marks are to be passed, and the side on which each mark is to be left. The course signal will be displayed on a board at the stern of the race committee signal vessel.
- 8.2** If one of the gate marks is missing and has not been replaced as described in RRS 34 then the remaining mark shall be rounded to port. This changes RRS 34.
- 8.3** The course for the Prince of Wales Cup race will be T6.

## 9. MARKS

---

- 9.1 Marks 1, 2, 3s and 3p will be red inflated cylinders.
- 9.2 Mark 1a will be a yellow inflated dumpy cylinder.
- 9.3 A new mark as provided in SI 11.1 will be a red inflated cylinder with a black band.
- 9.4 The mark at the starboard end of the start line will be the race committee signal vessel. The mark at the port end will be a race committee vessel or a buoy with an orange flag.
- 9.5 The finish line marks will be the race committee signal vessel at the starboard end and a buoy with a blue flag at the port end.

## 10. THE START

---

The starting line will be between staffs displaying orange flags on the starting marks.

## 11. CHANGE TO THE NEXT LEG OF THE COURSE

---

To change the next leg of the course, the race committee will lay a new mark (or move the finishing line) and remove the original mark as soon as practicable. When in a subsequent change a new mark is replaced, it will be replaced by the original mark.

## 12. THE FINISH

---

- 12.1 The finishing line will be between staffs displaying blue flags on the finishing marks.
- 12.2 If IC flag F with repeated sound signals is displayed by a race committee vessel stationed at or near marks 3s/3p, then boats shall leave mark 3p on its required side and proceed to the finish. This adds to RRS 32.2.

## 13. PENALTY SYSTEM

---

RRS 41 is changed so that the Two-Turns Penalty is replaced by the One-Turn Penalty.

## 14. TIME LIMITS AND TARGET TIMES [NP]

---

- 14.1 Time limits and target times are as follows:

Race	Target Time (mins)	Time Limit (mins)	Finish Window (mins)
Series	60	75	15
PoW	150	300	60

- 14.2 Failure to meet the target time will not be grounds for a request for redress. This changes rule 62.1(a).
- 14.3 During and after the Finish Window any boats that have not finished, and have not retired or been UFD or BFD, may be scored according to their observed positions on the course, which may be the position at the last mark rounded. This changes RRS 35, A4 and A5. A boat scored in this way will be notified by an official vessel pointing IC flag W at her with 2 sound signals. The race officer's decision in the matter shall be final and shall not be grounds for a request for redress. This changes RRS 62.1(a).

## 15. PROTESTS AND REQUESTS FOR REDRESS

---

- 15.1 Protest forms are available at the race office. Protests and requests for redress or reopening shall be delivered there within the appropriate time limit.
- 15.2 The protest time limit is 90 minutes after the last boat has finished the last race of the day.
- 15.3 Notices will be posted no later than 30 minutes after the protest time limit to inform competitors of hearings in which they are parties or named as witnesses. Hearings will be held in the designated protest room located at the FWC beginning at the time posted.
- 15.4 Notices of protests by the race committee or protest committee will be posted to inform boats under RRS 61.1(b).
- 15.5 On the last scheduled day of racing, a request for redress based on a protest committee decision shall be delivered no later than 30 minutes after the decision was posted. This changes RRS 62.2.
- 15.6 Adding to RRS 66, if race signal "N over A" is displayed ashore on the last scheduled day of racing a request for reopening a hearing shall be delivered not later than 30 minutes after the signal is displayed.

## 16. WIND WHISPER TROPHY SCORING

---

- 16.1 Seven series races are scheduled.
- 16.2 A minimum of 3 races shall be completed to constitute the series.
- 16.3 When fewer than 4 races have been completed, no score shall be excluded.

- 16.4 When 4 or more races have been completed, a boat's series score will be the total of her race scores excluding her worst excludable score.
- 16.5 A boat starting later than 5 minutes after her starting signal will be scored Did Not Start. This changes RRS A4 & A5.
- 16.6 To request correction of an alleged error in posted race or series results, a boat shall complete a scoring enquiry form available at the race office.

## 17. SAFETY REGULATIONS [DP][NP]

---

- 17.1 Boats not leaving the shore for a scheduled race shall promptly notify the race office.
- 17.2 Boats leaving the shore shall check-out from the tally control point located adjacent to the slipway, and check-in when returning ashore.
- 17.3 On arrival in the racing area, boats shall sail closely to the race committee signal vessel, clearly showing their sail numbers.
- 17.4 A boat that retires from racing shall notify the race committee before leaving the racing area, or if that is not possible, shall notify the race office as soon as possible after returning ashore.

## 18. REPLACEMENT OF CREW OR EQUIPMENT [DP]

---

- 18.1 Substitution of either helm or crew will be allowed at the discretion of the race committee. Requests shall be made on a form available at the race office.
- 18.2 All equipment that a competitor wishes to use during the event shall be declared at measurement/registration. There are no restrictions on the use of this equipment.
- 18.3 Substitution of damaged or lost equipment, whether or not declared at registration, will be allowed at the discretion of the race committee. Requests shall be made to the committee at the first reasonable opportunity.

## 19. EQUIPMENT AND MEASUREMENT CHECKS [DP]

---

Boats and equipment may be inspected at any time during the regatta for compliance with the class rules and sailing instructions. On the water, a boat can be instructed by a race committee equipment inspector or measurer to proceed immediately to a designated area for inspection.

## 20. IDENTIFICATION AND EVENT ADVERTISING [DP]

---

When provided by the organising authority, boats or crew shall carry, display or wear the following as instructed:

- (a) Tally wrist bands
- (b) Yellow, blue or red bibs
- (c) Event sponsor advertising
- (d) GPS positioning equipment.

## 21. OFFICIAL BOATS

---

- 21.1 Official vessels will be marked as follows:
 

Race committee signal vessel	Letters "RCYC" on banner on port side
Start pin & mark-layer	Letters "RCYC" on hull
Patrol	Yellow flag with black numbers
Protest committee	White flag with black "Jury"
Media	Black flag with white "Press"
Mother ship	Red flag at masthead
- 21.2 The race committee signal vessel is the 12m white-hulled sloop "Orienteer".

## 22. SUPPORT BOATS [DP]

---

- 22.1 For the purposes of these sailing instructions a support boat includes any boat that is under the control or direction of a *support person*.
- 22.2 Support boats shall display identification provided by the organising authority.
- 22.3 Support boats shall not interfere with boats racing or official vessels, or create a wake that affects boats racing.
- 22.4 Support boats shall not be positioned:
  - (a) closer than 50 metres of any boat racing;
  - (b) within 50 metres of the starting line and marks from the time of the preparatory signal until all boats have left the starting area, or the race committee signals a postponement, general recall or abandonment;

- (c) between any boat racing and the next mark of the course;
- (d) within 50 metres of any mark of the course while boats are in the vicinity of that mark;
- (e) within 50 metres of the finishing line and marks while boats are finishing.

**22.5** In addition, support boats that are motoring above 5 knots shall remain at least 150 metres from any boat racing.

**22.6** Support boats shall comply with any reasonable request from a regatta official.

## **23. BERTHING AND BOAT PARK [DP]**

---

When ashore boats shall be kept in their assigned places in the boat park, unless authorised by the race committee. Requests to remove a boat shall be made, in writing, to the committee at the first reasonable opportunity.

## **24. RADIO COMMUNICATION [DP]**

---

Except in an emergency, a boat that is racing shall not make voice or data transmissions and shall not receive voice or data communication that is not available to all boats.

## **25. PRIZES**

---

Prizes will be awarded as listed in the notice of race, except that the effective date for the Windmaster, Grapple and Ancient Mariner trophies shall be 26<sup>th</sup> August 2019. This changes NoR Appendix 2.

## **26. RISK STATEMENT**

---

**26.1** Rule 4 of the Racing Rules of Sailing states: "The responsibility for a boat's decision to participate in a race or to continue racing is hers alone".

**26.2** Sailing is by its nature an unpredictable sport and therefore inherently involves an element of risk. By taking part in the event, each competitor agrees and acknowledges that:

- (a) They are aware of the inherent element of risk involved in the sport and accept responsibility for the exposure of themselves, their crew and their boat to such inherent risk whilst taking part in the event;
- (b) They are responsible for the safety of themselves, their crew, their boat and their other property whether afloat or ashore;
- (c) They accept responsibility for any injury, damage or loss to the extent caused by their own actions and omissions;
- (d) Their boat is in good order, equipped to sail in the event and they are fit to participate;
- (e) provision of a race management team, patrol boats and other officials and volunteers by the event organiser does not relieve them of their own responsibilities;
- (f) Provision of patrol boat cover is limited to such assistance, particularly in extreme weather conditions, as can be practically provided in the circumstances;
- (g) It is their responsibility to familiarise themselves with any risks specific to this venue or this event drawn to their attention in any rules and information produced for the venue or event and to attend any safety briefing held for the event.

**26.3** The fact that the race committee conducts inspections of a boat does not reduce the responsibilities of each competitor set out in these sailing instructions.

## **27. INSURANCE**

---

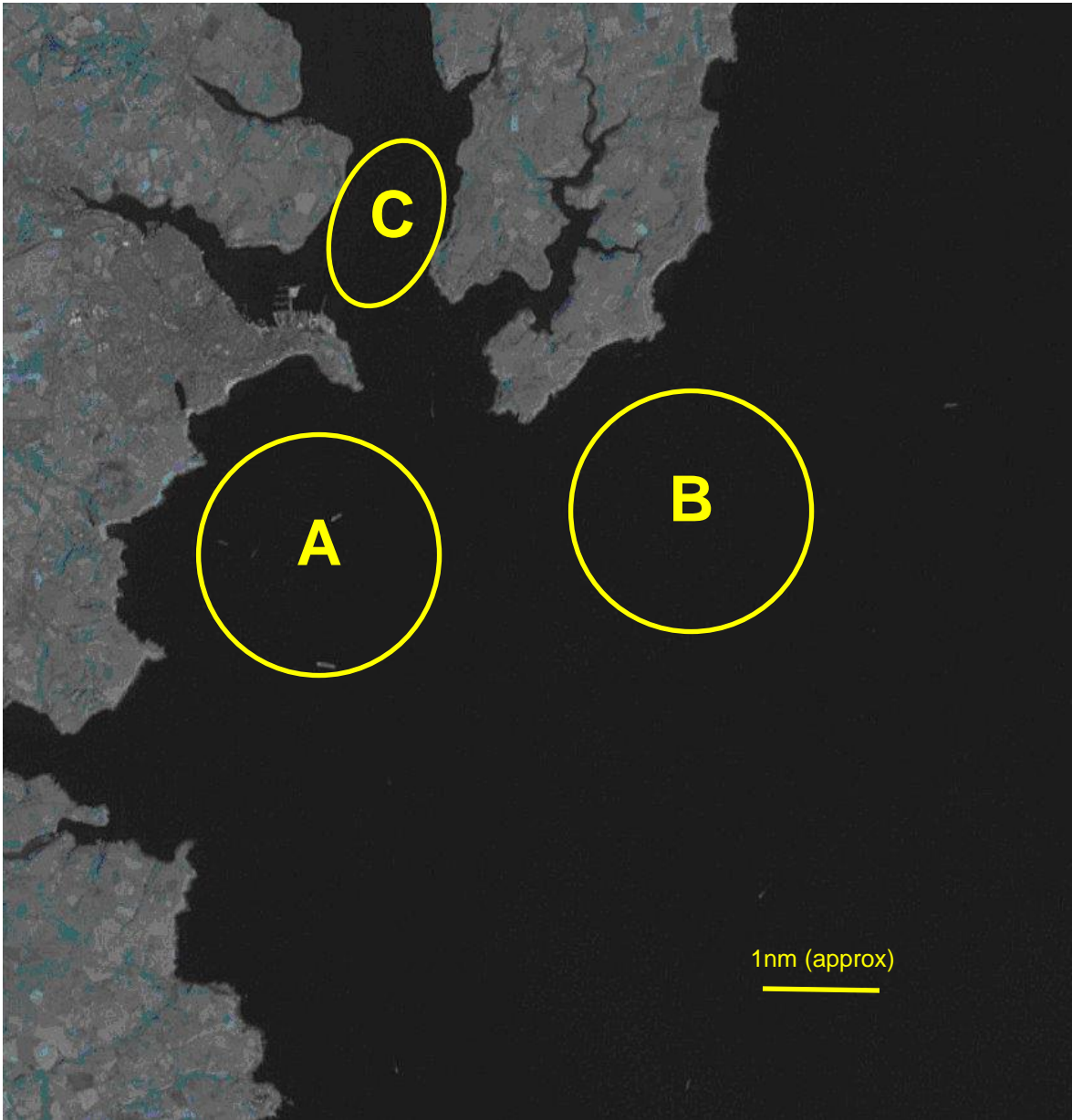
Each participating boat shall be insured with valid third-party liability insurance with a minimum cover of UK£3,000,000 per incident or the equivalent. Competitors will be required to sign a declaration to this effect at registration.

### **Social Programme at the RCYC (not part of the sailing instructions)**

Sunday 25 <sup>th</sup>	1900 Welcome Drinks Reception after competitors' race briefing (included in entry fee)
Wednesday 28 <sup>th</sup>	1900 AGM followed by BBQ (tickets £15 per person available from the club)
Friday 30 <sup>th</sup>	1930 Prize-Giving Dinner (tickets £25 per person available from the club)

## Addendum A

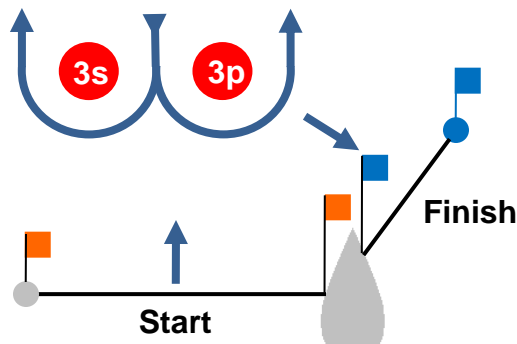
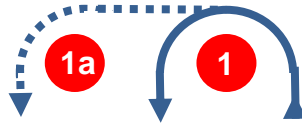
### Indicative course areas



## Addendum B

### Course illustration and mark rounding order

#### Course L: Windward-Leeward



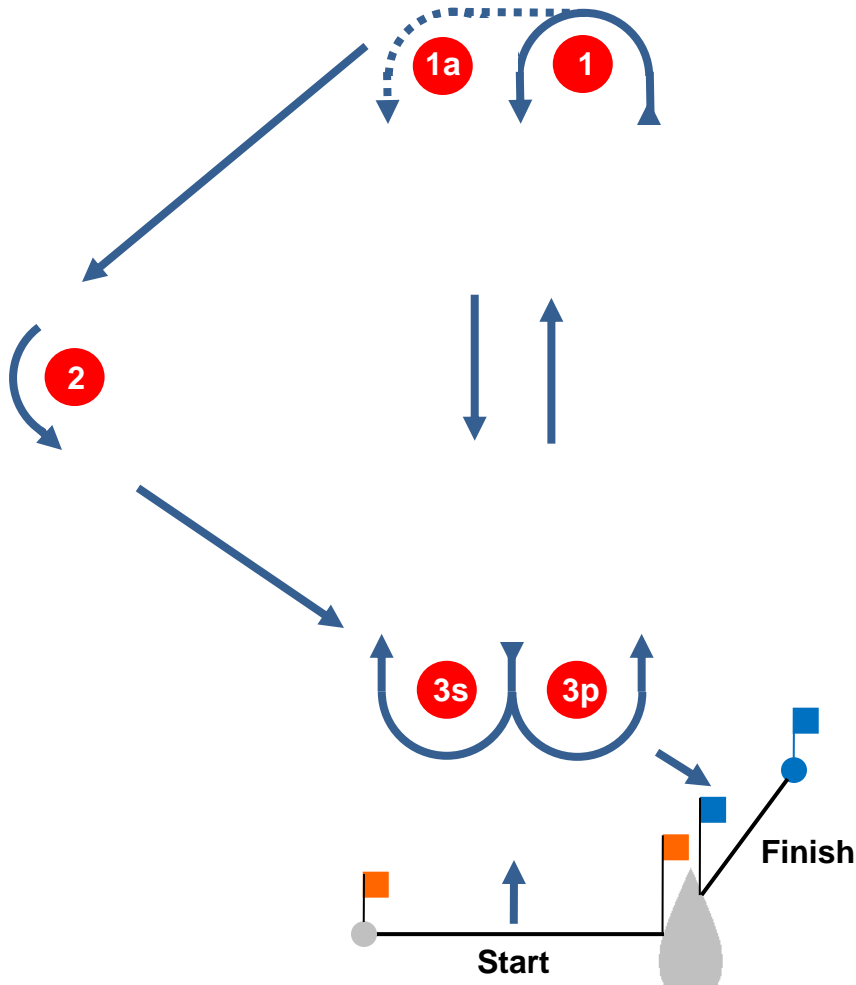
Signal	Mark Rounding Order
L2	Start - 1 - 1a - 3s/3p - 1 - 3p - Finish
L3	Start - 1 - 1a - 3s/3p - 1 - 3s/3p - 1 - 3p - Finish
L4	Start - 1 - 1a - 3s/3p - 1 - 3s/3p - 1 - 3s/3p - 1 - 3p - Finish

If IC flag F with repeated sound signals is displayed by a race committee vessel stationed at or near marks 3s/3p, then boats shall leave mark 3p on its required side and proceed to the Finish. This adds to RRS 32.2.

## Addendum B

### Course illustration and mark rounding order

#### Course T: Windward-Leeward-Triangle



Signal	Mark Rounding Order
T2	Start - 1 - 1a - 3s/3p - 1 - 2 - 3p - Finish
T3	Start - 1 - 1a - 3s/3p - 1 - 2 - 3p - 1 - 3p - Finish
T4	Start - 1 - 1a - 3s/3p - 1 - 2 - 3p - 1 - 3s/3p - 1 - 2 - 3p - Finish
T5	Start - 1 - 1a - 3s/3p - 1 - 2 - 3p - 1 - 3s/3p - 1 - 2 - 3p - 1 - 3p - Finish
T6	Start - 1 - 1a - 3s/3p - 1 - 2 - 3p - 1 - 3s/3p - 1 - 2 - 3p - 1 - 3s/3p - 1 - 2 - 3p - Finish

If IC flag F with repeated sound signals is displayed by a race committee vessel stationed at or near marks 3s/3p, then boats shall leave mark 3p on its required side and proceed to the Finish. This adds to RRS 32.2.